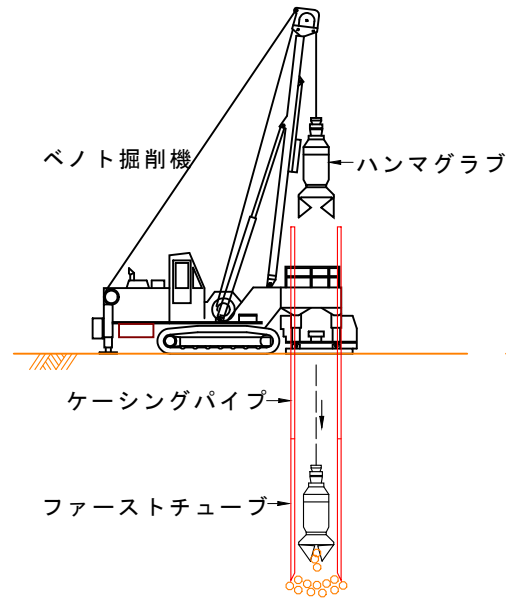
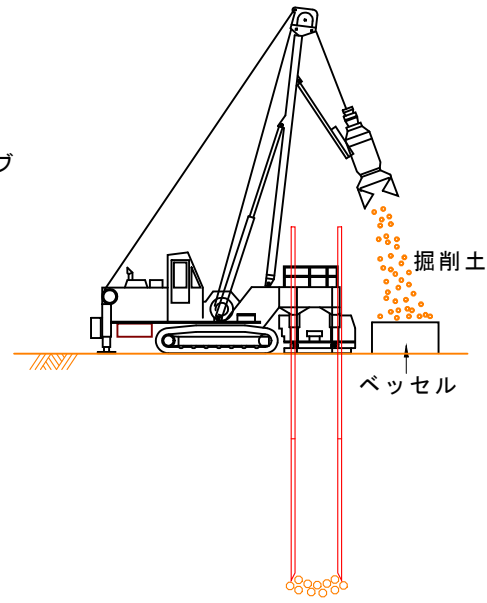


ディープウェル作業手順図

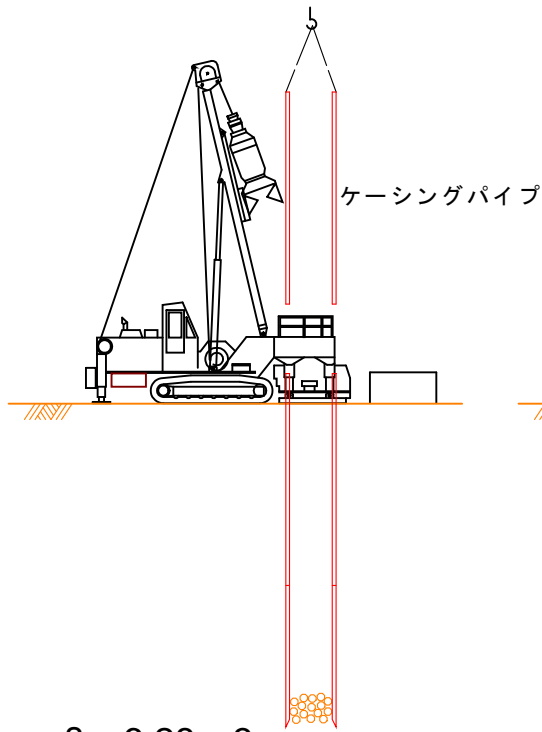
①掘削工



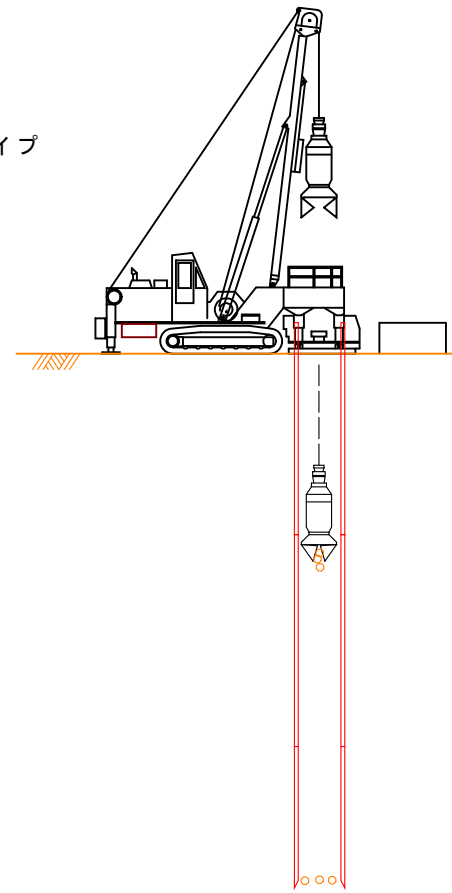
②排土工



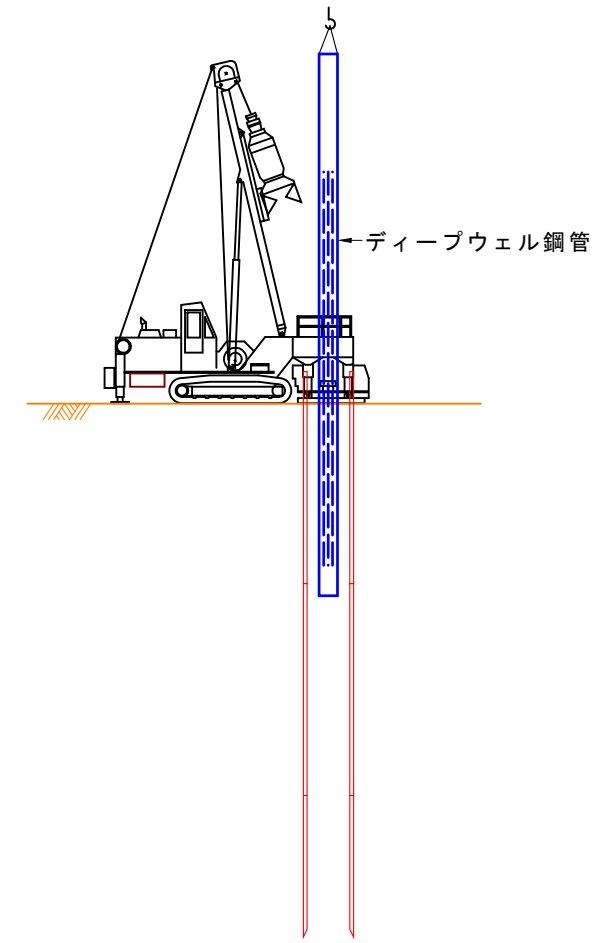
③ケーシングパイプ接続工



④スライム処理工

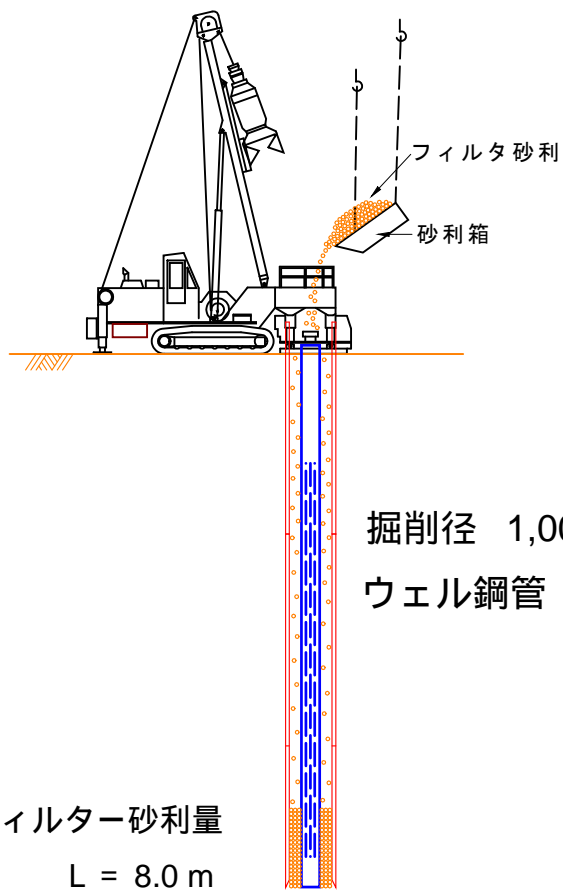


⑤ディープウェル鋼管挿入工

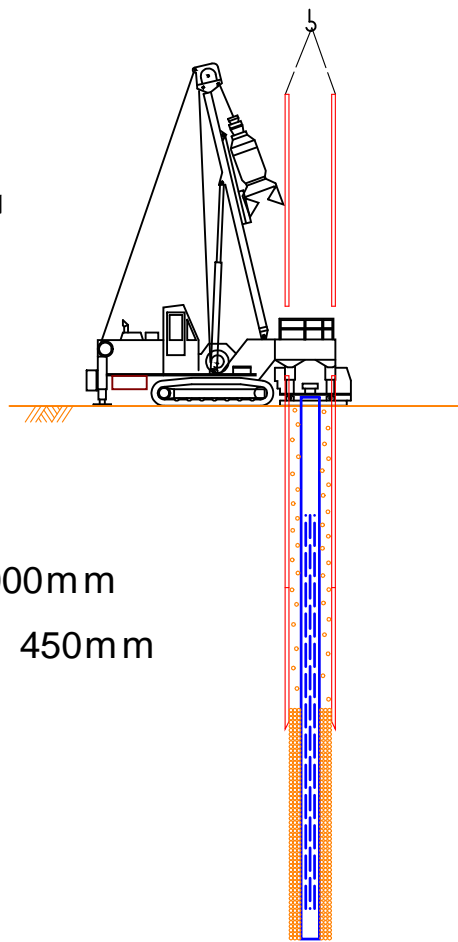


掘削土量
 $V = 0.5 * 2 * \pi * 8 = 6.28m^3$

⑥フィルタ砂利充填工



⑦ケーシングパイプ引抜工



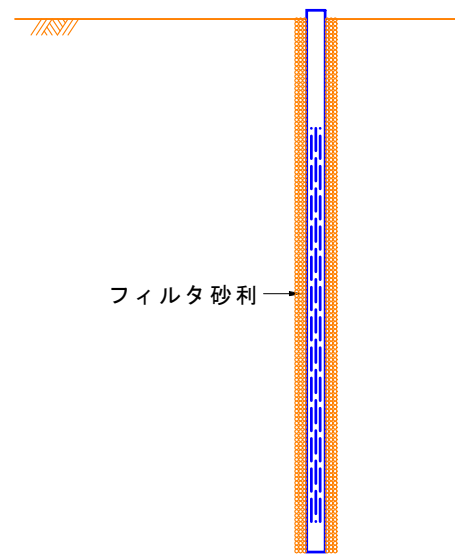
掘削径 1,000mm
 ウェル鋼管 450mm

フィルター砂利量

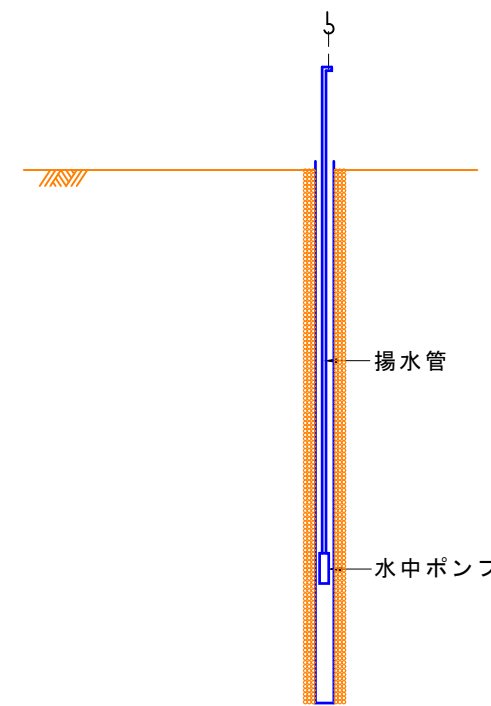
$L = 8.0 m$

$V = (0.5 * 0.5 - 0.25 * 0.25) * \pi * 8m = 4.96m^3$

⑧ディープウェル設置完了



⑨水中ポンプ挿入工



⑩揚水設備設置完了

